
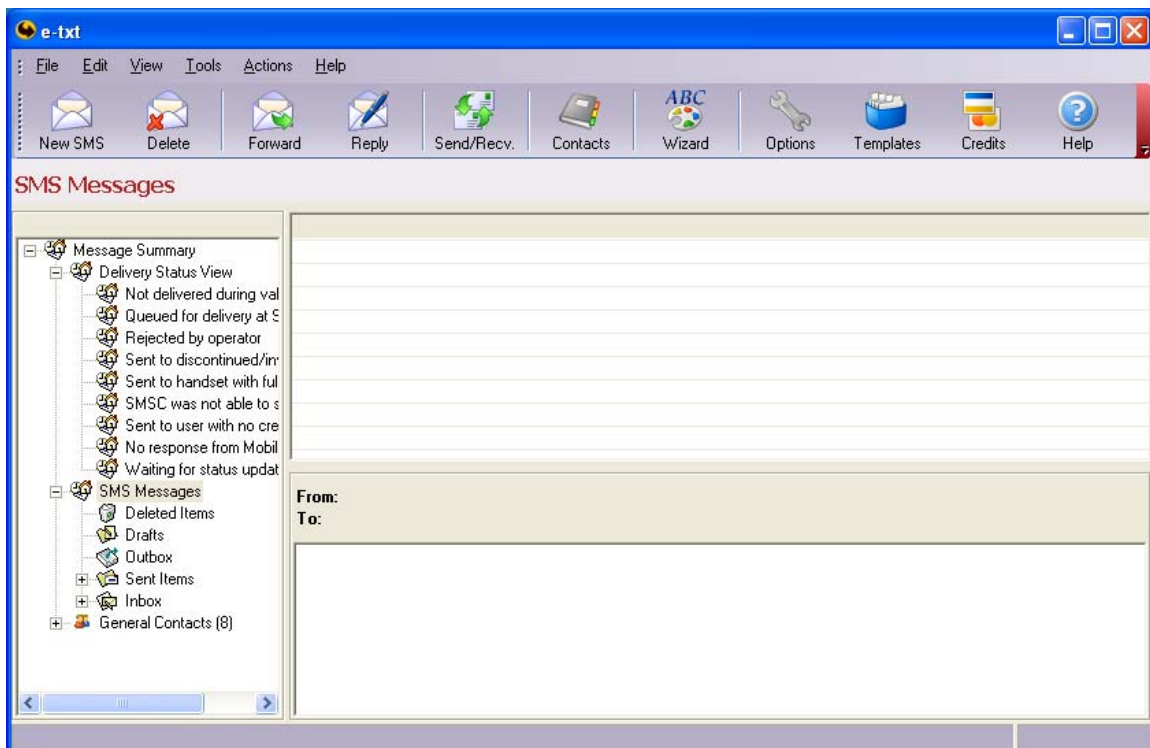


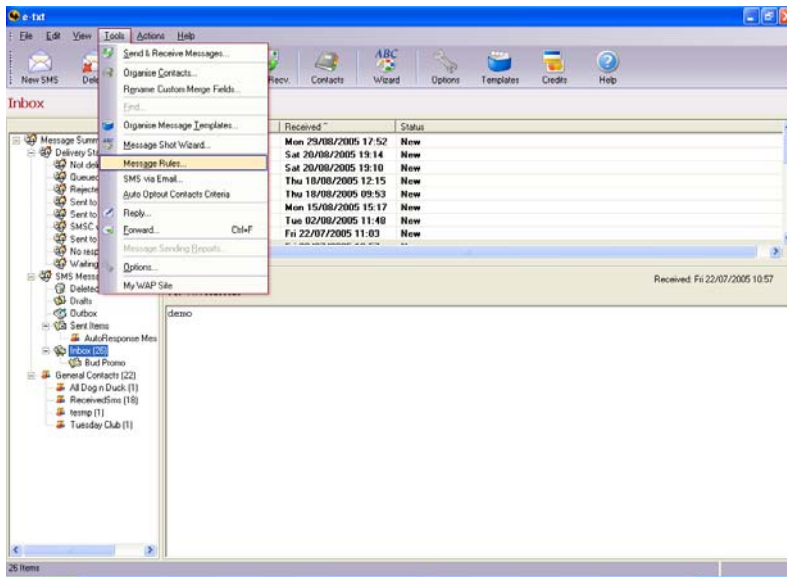
How to set up one automatic reply to go to a certain number of people before sending a different automatic reply

Sending automatic replies can be very useful particularly if you are running a promotion or a competition. Sometimes it is necessary to limit the amount of automatic responses for example, if only the first 10 people to reply win a prize. You can set up e-txt to send the first ten people in this case a reply saying that they've won and everyone else a reply saying that they haven't. This could also be useful for recruitment agencies offering a short notice job interview to all their suitable members but only being able to interview quickest ten people.

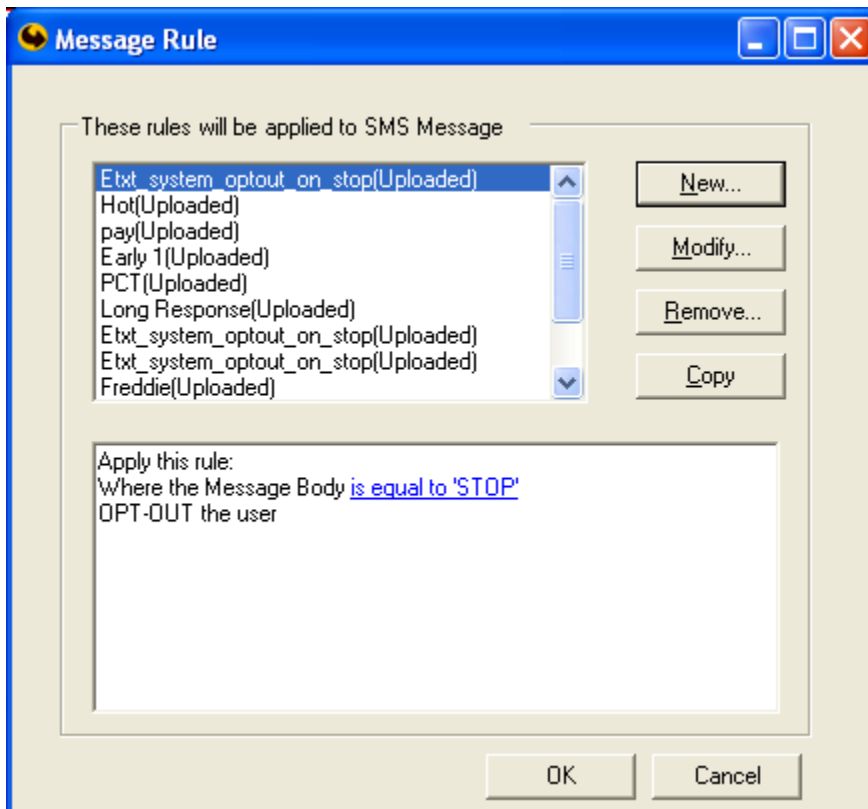
1. Open e-txt™ by clicking on the  icon on your desktop or selecting **Start-> Programs-> e-txt -> e-txt**
2. Ensure that the **SMS Messages** toolbar is displayed by having a messaging folder selected in the **Main Navigation Tree** (If a **Contacts** folder is selected the Main Toolbar changes dynamically to the **Contacts Toolbar**).



3. Go to **Tools** on the main toolbar and click on **Message Rules**



4. The message rule window will appear. Click New



5. In the first box you might tick **If message comes in on specified Inbound Line**. This is used if you are promoting the offer on print material to get people to text in and join your database.

Another way would be to get them to use a keyword, and tick **Where the message body starts with specific words**. You could combine this with the Rule **How to automatically add names and contact numbers to your contacts from received text messages** if you also wish for names to be added.

6. In the second box tick **Reply with Message xxx to first n senders and Message yyy to other**.

Rule

Select your conditions and Action first, then specify the value in the description

1. Select the condition for your Rule

- ☐ Where the From line contain people
- ☐ Where the Message Body starts with specific words
- ☐ If a message comes outside these hours
- ☐ Where the Message Body is equal to specified text
- ☒ If Message comes on specified Inbound line

2. Select the Action for your Rule

- ☒ Reply with Message xxx to first n senders and Message yyy to other
- ☐ Remove sender from group as given in the 2nd word of message
- ☐ Reply with message returned by executing specified URL
- ☐ ADD sender to group (1st word of message is groupname, 2nd word

3. Rule Description(Click on an underlined Rule Criteria/Action to edit it)

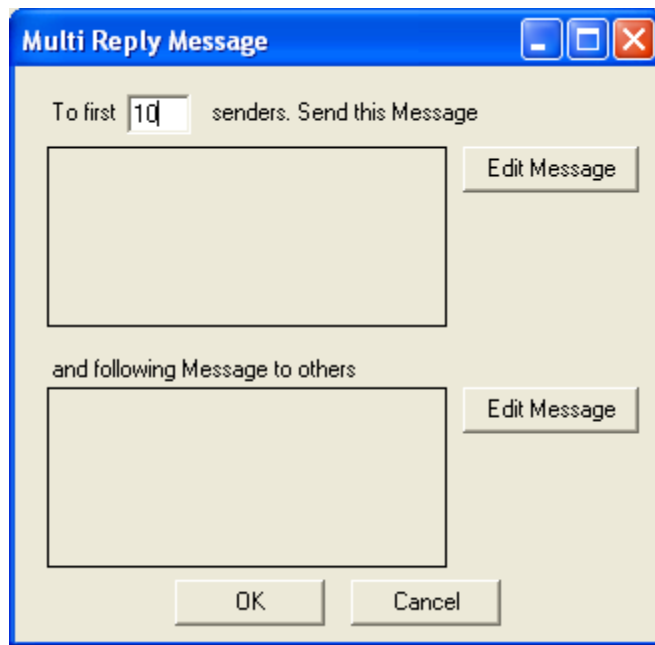
Apply this rule:
If Message comes on [specified Inbound line](#)
Reply with [Message xxx to first n senders and Message yyy to others](#)

4. Name of the rule

Text 2 win

Ok Cancel

7. Click on the highlighted [Message xxx to first n senders and Message yyy to others](#). Type the number of senders you want receive the first automatic response.



8. Click on the top **Edit message** and you will see a window like the new SMS window for you to write your first message (**see below**).

SMS Message

File Edit View Tools Help

Send Save Cut Copy Paste Merge Template Translate Delivery Help

Response Options: Recipient Can't Reply

From: Dynmark Delivery: As soon as possible ☐ Send Email

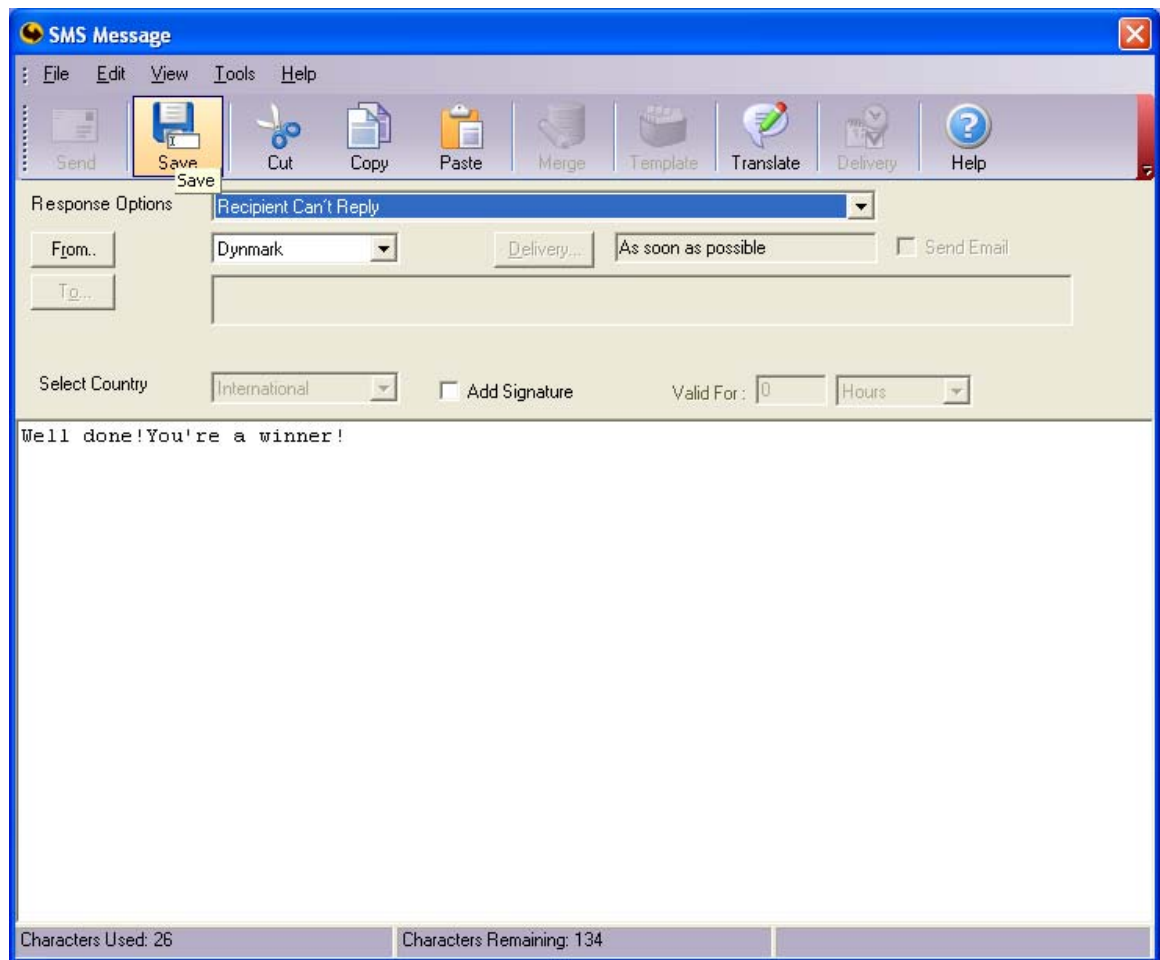
To:

Select Country: International ☐ Add Signature Valid For: 0 Hours

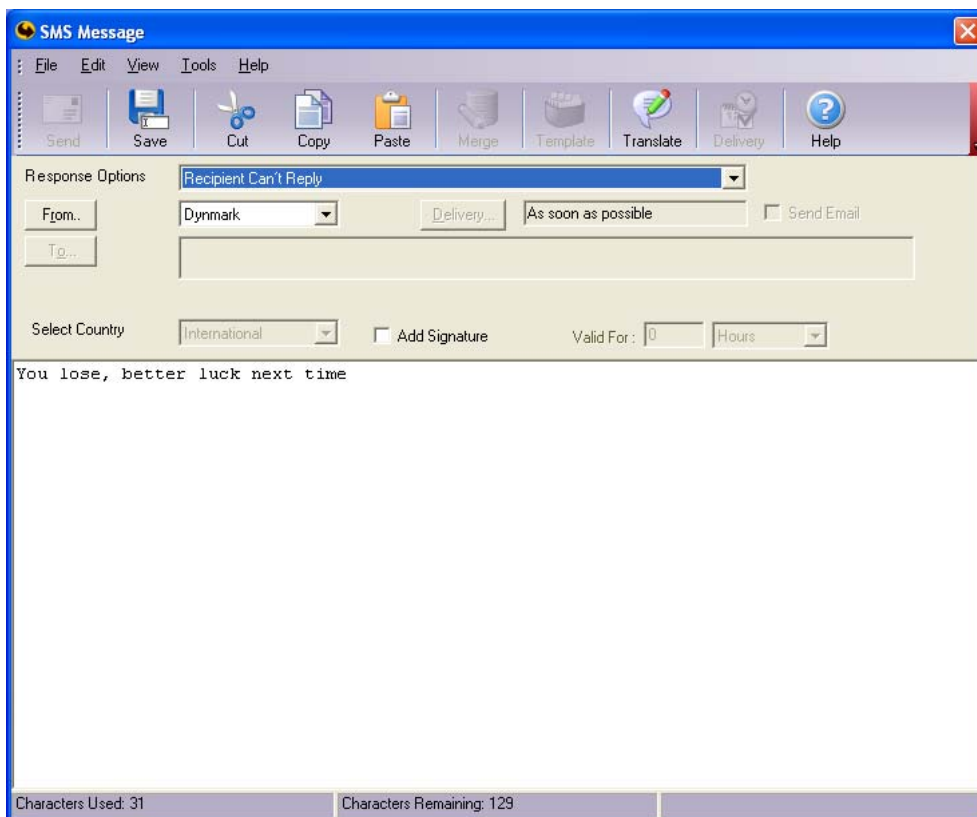
Well done! You're a winner!

Characters Used: 26 Characters Remaining: 134

9. Click on the **Save** icon to save the message to return to the **Multi Reply Message Window**.



10. Click on the bottom **Edit Message** to the right of and following message to others to write the automatic reply that you wish to send to all other responses that come after the first 10.



11. Write your message and Click **Save** to save it.

SMS Message

File Edit View Tools Help

Send Save Cut Copy Paste Merge Template Translate Delivery Help

Response Options Save Recipient Can't Reply

From: Dynmark Delivery: As soon as possible Send Email

To:

Select Country: International Add Signature Valid For: 0 Hours

You lose, better luck next time

Characters Used: 31 Characters Remaining: 129

12. Click ok in the Multi Reply Message Window

Multi Reply Message

To first 10 senders. Send this Message

Well done! You're a winner! Edit Message

and following Message to others

You lose, better luck next time Edit Message

OK Cancel

13. You will return to the **Rule** window. In the fourth box, create a name of your choice for the new rule.(see below)

Rule

Select your conditions and Action first, then specify the value in the description

1. Select the condition for your Rule

- ☐ Where the From line contain people
- ☐ Where the Message Body starts with specific words
- ☐ If a message comes outside these hours
- ☐ Where the Message Body is equal to specified text
- ☒ If Message comes on specified Inbound line

2. Select the Action for your Rule

- ☒ Reply with Message xxx to first n senders and Message yyy to other
- ☐ Remove sender from group as given in the 2nd word of message
- ☐ Reply with message returned by executing specified URL
- ☐ ADD sender to group (1st word of message is groupname, 2nd word

3. Rule Description(Click on an underlined Rule Criteria/Action to edit it)

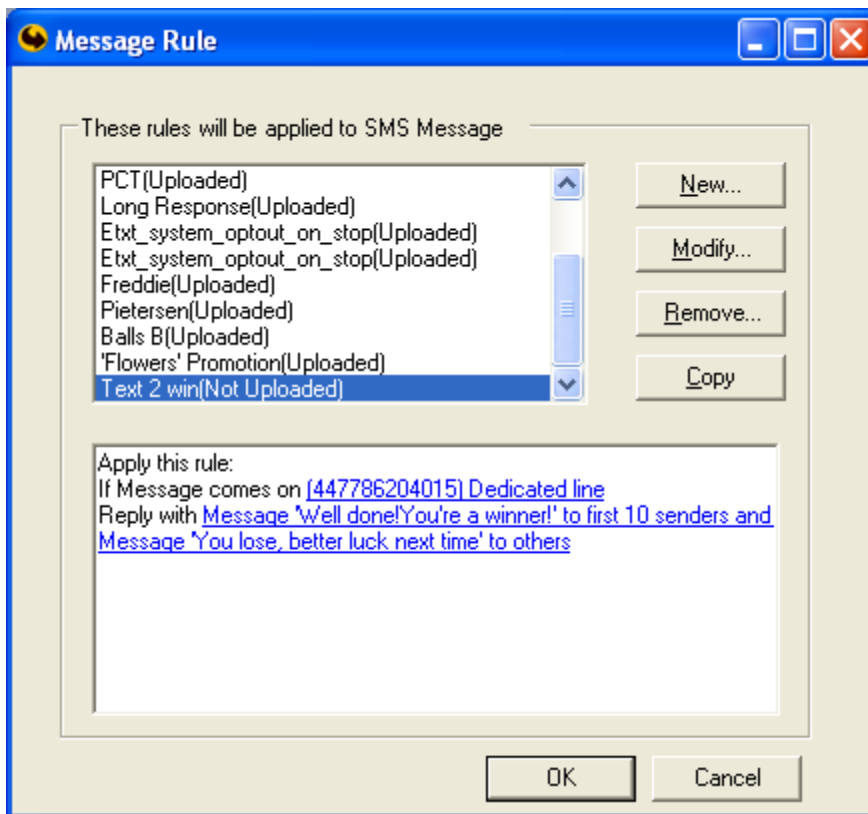
Apply this rule:
If Message comes on specified Inbound line
Reply with Message xxx to first n senders and Message yyy to others

4. Name of the rule

Text 2 win

Ok Cancel

14. Click ok



15. You will see that the Text 2 win rule is highlighted. Note that it is not yet 'Uploaded'. This means it has not been uploaded to our server and will not be active. The Rule is uploaded when you click **OK** to this Rules window. Once it is uploaded, it will work whether your computer is on or not.